

MAKE A WEATHER VANE

It's easy to see which way the wind blows!

You will need: cardboard, a drinking straw or a thin wooden dowel, a thread spool, paper, tape, a stapler, modeling clay, and a few stones or rocks.



① On a piece of cardboard about 6 inches square, mark the points of the compass: N, W, S, E.

② Next, tape a little piece of paper over the hole on top of the spool. On cardboard, draw two arrows about

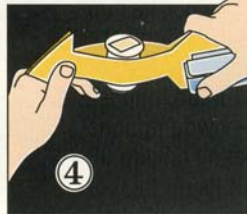


7 inches long each. ③ Cut them out and tape one to the spool. ④ Staple the other arrow to the first one and tape the ends together.

⑤ Put a straw or a wooden dowel inside the spool. The spool should move freely.



Put some modeling clay on the center of the cardboard square, then stick the straw or dowel into it. Position the cardboard so the compass points face the correct directions. (Use a compass. If you don't have one, look for the sun early in the



morning. It rises in the east, so point the E on the cardboard in its direction.) To keep the cardboard in place, weight it down with a few rocks or stones.

When the wind blows, the arrow will point in the direction from which it comes.

