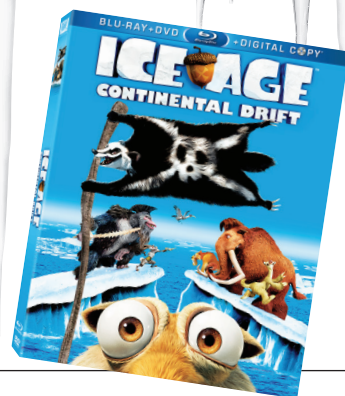


Plate Tectonics

The Science Behind the Drift



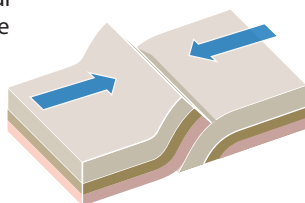
The plates

Earth's outermost layer is fragmented into plates that are moving relative to one another as they sit on top of the hot, semifluid material beneath them.



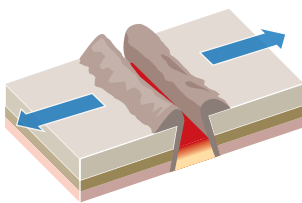
Where plates meet

There are four types of plate boundaries.



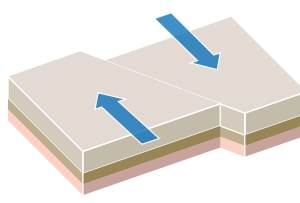
1. Convergent boundary

Occurs where two plates slowly slide towards each other, usually forming a subduction zone



2. Divergent boundary

Occurs where plates are moving apart, as magma pushes up from the mantle, creating new crust



3. Convergent boundary

Occurs where plates slide or grind past each other

4. Plate boundary zone

Usually occurs along a broad belt where the interactions are unclear, and the boundaries are not well defined

